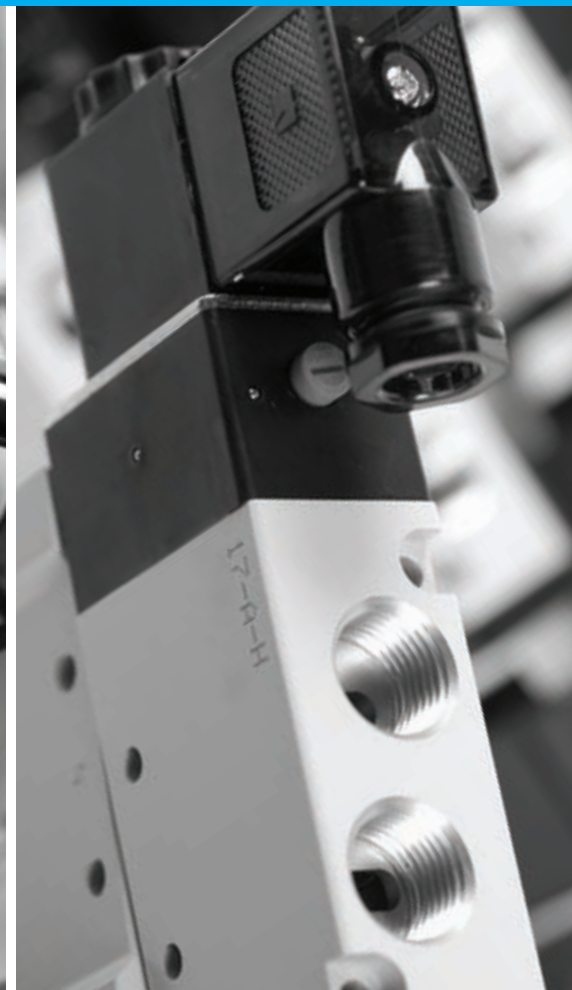


PNEUMATIC PRODUCTS AT OEM PRICING



MFD



Thank you for considering MFD Pneumatics. MFD Pneumatics has pioneered reliable, well engineered, quality fluid power components for industry. A substantial fluid power distributor network, expert technical support and a one-year warranty support the MFD PNEUMATICS product line. Additionally, you will note that a toll-free telephone number and interactive website is available.

What can you expect from MFD Pneumatics?

- ❖ Product “fit and finish” that is uncommon in the fluid power business.
- ❖ An extensive low cost product offering
- ❖ Exceptional service

In addition, a sincere desire to exceed your expectations and to become your supplier of choice. MFD Pneumatics is distributed throughout North America.



Contents:

- 2-6 **Solenoid Valves, Air Pilot Valves, Manifolds**
- 7 **Solenoid Valves - Water, Air & Oil**
- 8-9 **Hand Lever, Push-Pull Valves & Foot Valves**
- 10 **Flow Control Valves & Mini Regulators**
- 11 **Filter - Regulators**
- 11-13 **FR.L. Combination & Accessories**
- 13-14 **Compact Cylinders & Accessories**
- 15 **O.E.M. Specialty Products**

MFD Pneumatics
phone 1-866-264-9560 or fax 1-773-685-0597



FM39322 ISO 9001-2000

Solenoid Valves

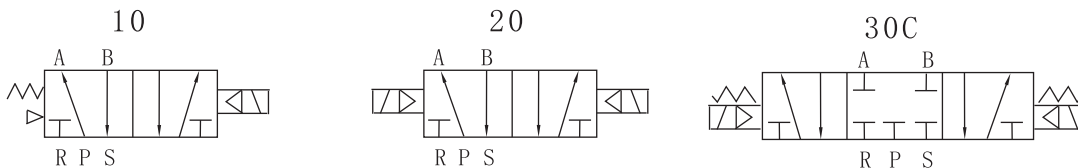


M4V100 series

M4V200 series

| | | | |
|-------------------|--------------------------------|-----------|---------------------------------|
| Model | M4V110-06 | M4V120-06 | M4V130C-06 |
| Media | Air | | |
| Actuation | Internally piloted | | |
| Type | 5 port 2 position | | 5 port 3 position closed center |
| Flow | Cv 0.67 | | Cv 0.50 |
| Port size | 1/8" NPT | | |
| Lubrication | Not required | | |
| Pressure range | 22 to 120 PSI | | |
| Temp. range | 23~140°F | | |
| Voltage range | ±10% | | |
| Power Consumption | 24VDC:2.5W | | 110VAC:8.5VA |
| Insulation | F class | | |
| Protection | IP65 (DIN 40050) | | |
| Connection | DIN / LED Connector or Grommet | | |
| Max Frequency | 5 cycles/sec | | 3 cycles/sec |
| Min Activate Time | 0.05 sec. | | |

| | | | | | | |
|-------------------|--------------------------------|-----------|---------------------------------|--|-----------|-------------------|
| Model | M4V210-06 | M4V220-06 | M4V230C-06 | M4V210-08 | M4V220-08 | M4V230C-08 |
| Media | Air | | | | | |
| Actuation | Internally piloted | | | | | |
| Type | 5 port 2 position | | 5 port 3 position closed center | 5 port 2 position | | 5 port 3 position |
| Flow | Cv 0.78 | | Cv 0.67 | Cv 0.89 | | Cv 0.67 |
| Port size | 1/8" NPT | | | Inlet port 1/4" NPT - Exhaust 1/8" NPT | | |
| Lubrication | Not required | | | | | |
| Pressure range | 22 to 120 PSI | | | | | |
| Temp. range | 23~140°F | | | | | |
| Voltage range | -15%~+10% | | | | | |
| Power Consumption | 110VAC:2.5VA | | | 24VDC:3.0W | | |
| Insulation | F class | | | | | |
| Protection | IP65 (DIN 40050) | | | | | |
| Connection | DIN / LED Connector or Grommet | | | | | |
| Max Frequency | 5 cycles/sec | | 3 cycles/sec | 5 cycles/sec | | 3 cycles/sec |
| Min Activate Time | 0.05 sec | | | | | |

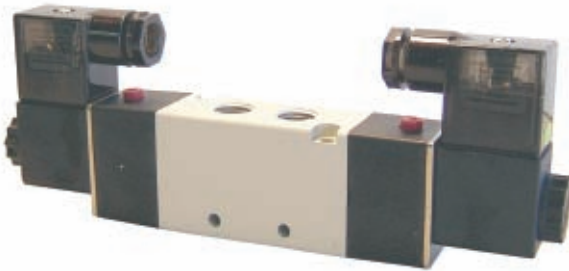


Refer to MFD Pneumatics' website for further dimensions.

| | | | | | |
|---------------|--------------------------------|--|----------------------|-------------------|--------------------------|
| Ordering code | | | | | |
| M4V | 1 | 10 | 06 | 24 VDC | |
| Model | Code | Valve Type | Port Size | Voltage | Electrical |
| M4V | 1: 100 Series 2: 200 Series | 10: Single Solenoid 20: Double Solenoid 30C: Double Solenoid closed center | 06: 1/8" 08: 1/4" | 24 VDC 110 VAC | Blank- DIN 1: Grommet |

Solenoid Valves

M4V300 series

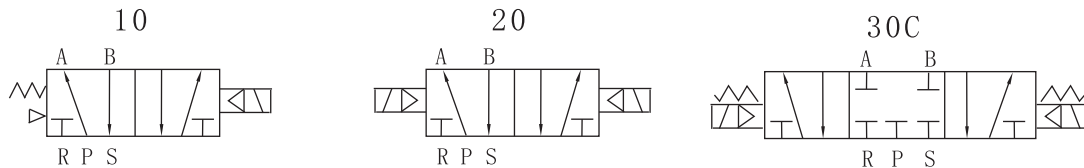


| | | | |
|-------------------|--------------------------------|-----------|---------------------------------|
| Model | M4V310-08 | M4V320-08 | M4V330C-08 |
| Media | Air | | |
| Actuation | Internally piloted | | |
| Type | 5 port 2 position | | 5 port 3 position closed center |
| Flow | Cv 1.39 | | Cv 1.00 |
| Port size | 1/4" NPT | | |
| Lubrication | Not required | | |
| Pressure range | 22 to 120 PSI | | |
| Temp. range | 23~140°F | | |
| Voltage range | ±10% | | |
| Power Consumption | 24VDC:2.5W | | 110VAC:8.5VA |
| Insulation | F class | | |
| Protection | IP65 (DIN 40050) | | |
| Connection | DIN / LED Connector or Grommet | | |
| Max Frequency | 4 cycles/sec | | 3 cycles/sec |
| Min Activate Time | 0.05 sec. | | |

Refer to MFD Pneumatics' website for further dimensions.

| | | | |
|-------------------|--------------------------------|-----------|---------------------------------|
| Model | M4V410-15 | M4V420-15 | M4V430C-15 |
| Media | Air | | |
| Actuation | Internally piloted | | |
| Type | 5 port 2 position | | 5 port 3 position closed center |
| Flow | Cv 2.79 | | Cv 1.76 |
| Port size | 1/2" NPT | | |
| Lubrication | Not required | | |
| Pressure range | 22 to 120 PSI | | |
| Temp. range | 23~140°F | | |
| Voltage range | ±10% | | |
| Power Consumption | 24VDC:2.5W | | 110VAC:8.5VA |
| Insulation | F class | | |
| Protection | IP65 (DIN 40050) | | |
| Connection | DIN / LED Connector or Grommet | | |
| Max Frequency | 3 cycles/sec | | |
| Min Activate Time | 0.05 sec. | | |

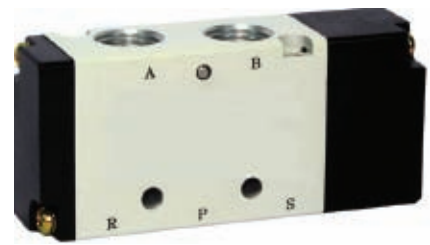
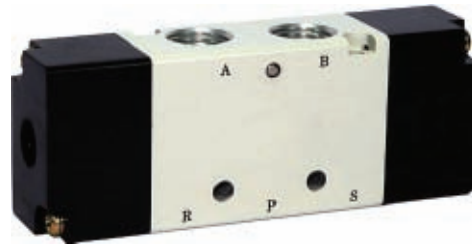
M4V400 series



| Ordering code | | | | | |
|---------------|---------------|------------------------------------|-----------|---------|------------|
| M4V | 3 | 10 | 08 | 24 VDC | |
| Model | Code | Valve Type | Port Size | Voltage | Electrical |
| M4V | 3: 300 Series | 10: Single Solenoid | 08: 1/4" | 24 VDC | Blank- DIN |
| | 4: 400 Series | 20: Double Solenoid | 15: 1/2" | 110 VAC | 1: Grommet |
| | | 30C: Double Solenoid closed center | | | |

Air Pilot Valves

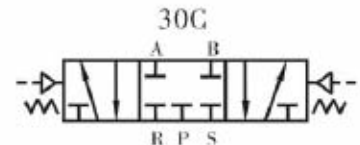
M4A200 series
M4A300 series



| | | | | | | |
|-------------------|-------------------|-----------|---------------------------------------|--|-----------|----------------------|
| Model | M4A210-06 | M4A220-06 | M4A230C-06 | M4A210-08 | M4A220-08 | M4A230C-08 |
| Media | Air | | | | | |
| Actuation | External pilot | | | | | |
| Type | 5 port 2 position | | 5 port 3 position closed center | 5 port 2 position | | 5 port 3 position |
| Flow | Cv 0.78 | | Cv 0.67 | Cv 0.89 | | Cv 0.67 |
| Port size | 1/8" NPT | | | Inlet port 1/4" NPT - Exhaust 1/8" NPT | | |
| Lubrication | Not required | | | | | |
| Pressure range | 22 to 120 PSI | | | | | |
| Temp. range | 23~140°F | | | | | |
| Min Activate Time | 5 cycles/sec | | 3 cycles/sec | 5 cycles/sec | | 3 cycles/sec |

| | | | | | | |
|-------------------|-------------------|-----------|---------------------------------------|--|-----------|----------------------|
| Model | M4A310-08 | M4A320-08 | M4A330C-08 | M4A310-10 | M4A320-10 | M4A330C-10 |
| Media | Air | | | | | |
| Actuation | External pilot | | | | | |
| Type | 5 port 2 position | | 5 port 3 position closed center | 5 port 2 position | | 5 port 3 position |
| Flow | Cv 1.39 | | Cv 1.00 | Cv 1.67 | | Cv 1.00 |
| Port size | 1/4" NPT | | | Inlet port 3/8" NPT - Exhaust 1/4" NPT | | |
| Lubrication | Not required | | | | | |
| Pressure range | 22 to 120 PSI | | | | | |
| Temp. range | 23~140°F | | | | | |
| Min Activate Time | 5 cycles/sec | | 3 cycles/sec | 5 cycles/sec | | 3 cycles/sec |

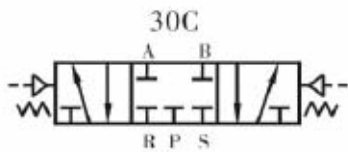
Refer to MFD Pneumatics' website for further dimensions.



| | | | |
|---------------|---------------|---------------------------|-----------|
| Ordering code | | | |
| M4A | — | 2 | — |
| | | 10 | — |
| | | | 06 |
| Model | Code | Valve Type | Port Size |
| M4A | 2: 200 Series | 10: Single Pilot 5/2 way | 06: 1/8" |
| | 3: 300 Series | 20: Double Pilot 5/2 way | 08: 1/4" |
| | | 30C: Double Pilot 5/3 way | 10: 3/8" |
| | | closed center | |

Air Pilot Valves

M4A400 series



| | | | |
|-------------------|-------------------|-----------|------------------------------------|
| Model | M4A410-15 | M4A420-15 | M4A430C-15 |
| Media | Air | | |
| Actuation | External pilot | | |
| Type | 5 port 2 position | | 5 port 3 position closed center |
| Flow | Cv 2.79 | | Cv 1.68 |
| Port size | 1/2" NPT | | |
| Lubrication | Not required | | |
| Pressure range | 22 to 120 PSI | | |
| Temp. range | 23~140°F | | |
| Min Activate Time | 3 cycles/sec | | |

Refer to MFD Pneumatics' website for further dimensions.

| | | | | | | |
|---------------|---|---------------|---|---|---|-----------|
| Ordering code | | | | | | |
| M4A | — | 4 | — | 10 | — | 08 |
| Model | | Code | | Valve Type | | Port Size |
| M4A | | 4: 400 Series | | 10: Single Pilot 5/2 way 20: Double Pilot 5/2 way 30C: Double Pilot 5/3 way closed center | | 15: 1/2" |

Manifolds



Gaskets and valve mounting screws included with manifold.

| | | | | |
|-------|--------|------------------|------------------|------------------|
| Model | M4V100 | M4V200 M4A200 | M4V300 M4A300 | M4V400 M4A400 |
| M100M | ● | | | |
| M200M | | ● | | |
| M300M | | | ● | |
| M400M | | | | ● |

Refer to MFD Pneumatics' website for further dimensions.

| | | |
|-------------------------|---|---------------------------|
| Ordering code | | |
| M100M | — | 2F |
| Model | | Number of Stations |
| M100M: 100 Series Valve | | M100M: 2F to 8F Stations* |
| M200M: 200 Series Valve | | M200M: 2F to 8F Stations* |
| M300M: 300 Series Valve | | M300M: 2F to 8F Stations* |
| M400M: 400 Series Valve | | M400M: 2F to 7F Stations* |

Manifold Blanking Plate



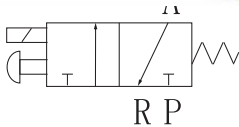
| | | | | |
|-------|---------|---------|---------|---------|
| Model | M100M-B | M200M-B | M300M-B | M400M-B |
| M100M | ● | | | |
| M200M | | ● | | |
| M300M | | | ● | |
| M400M | | | | ● |

Refer to MFD Pneumatics' website for further dimensions.

Solenoid Valves



M3V1 series



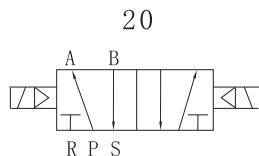
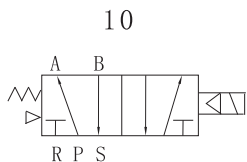
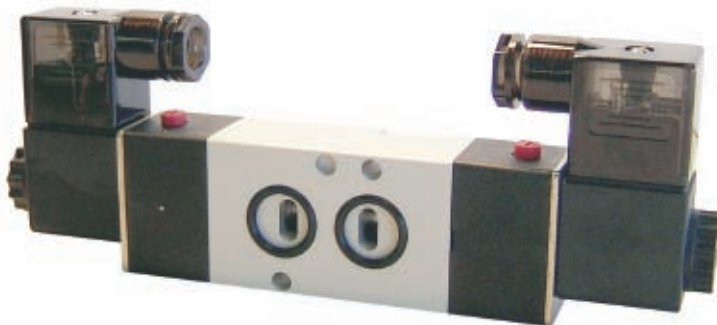
| | |
|--------------------|--------------------------------|
| Model | M3V1-06 |
| Media | Air |
| Actuation | Direct acting |
| Port size | 1/8" NPT |
| Type | 3 port - 2 position |
| Temp. range | 23~140° F |
| Flow | Cv .051 |
| Lubrication | Not required |
| Pressure range | 0 to 120 PSI |
| Power consumption | 24 VDC:3.0W / 110 VAC: 8.5VA |
| Protection | IP65(DIN40050) |
| Connection | DIN / LED Connector or Grommet |
| Max. frequency | 10 cycles per sec. |
| Insulation | F class |
| Voltage range | -15%~+10% |
| Min. activate time | 0.05 sec. |

Ordering code

| | | | | | | | | |
|-------|---|-------------|---|-----------|---|-------------------|---|--------------------------|
| M3V | — | 1 | — | 06 | — | 24VDC | — | |
| Model | | Code | | Port Size | | Voltage | | Electrical |
| M3V | | 1: 1 Series | | 06: 1/8" | | 24 VDC 110 VAC | | Blank: DIN 1: Grommet |

Refer to MFD Pneumatics' website for further dimensions.

NAMUR series



| | |
|--------------------|-------------------------------|
| Model | M4M310-08 & M4M320-08 |
| Media | Air |
| Actuation | Internally piloted |
| Port size | 1/4" NPT |
| Type | 5 port - 2 position |
| Temp. range | 23~140° F |
| Flow | Cv 1.39 |
| Lubrication | Not required |
| Pressure range | 22 to 116PSI |
| Power consumption | 24 VDC:3.0W 110 VAC: 8.5VA |
| Protection | IP65(DIN40050) |
| Connection | DIN Connector / LED |
| Max. frequency | 3 cycles per sec. |
| Insulation | F class |
| Voltage range | -15%~+10% |
| Min. activate time | 0.05 sec. |

Ordering code

| | | | | | | | | |
|-------|---|---------------|---|--|---|-----------|---|-------------------|
| M4M | — | 3 | — | 10 | — | 08 | — | 24VDC |
| Model | | Code | | Valve Type | | Port Size | | Voltage |
| M4M | | 3: 300 Series | | 10: Single Solenoid 20: Double Solenoid | | 08: 1/4" | | 24 VDC 110 VAC |

Refer to MFD Pneumatics' website for further dimensions.

Solenoid Valves

M2PV series



Valve Specifications

| | | |
|------------------------------------|----------------------------------|------------|
| Model | M2PV150-15 | M2PV250-25 |
| Acting | Internally Piloted | |
| Acting Type | Piston normally closed | |
| Orifice Size | 1/2" | 1" |
| Flow | Cv 5.30 | Cv 12.00 |
| Port size | 1/2" NPT | 1" NPT |
| Viscosity limit | Under 20 CST | |
| Operating Temperature Differential | Minimum 7 PSI Maximum 142 PSI | |
| Proof Pressure | 213 PSI | |
| Material | Brass | |

Refer to MFD Pneumatics' website for further dimensions.

Solenoid Specifications

| Model | Power | Freq. | Voltage Range | Power | Electrical | Insulation |
|---------|-------|-------|---------------|-------|----------------------|------------|
| M2PV150 | AC | 50Hz | -15%~+10% | 110VA | DIN or Grommet | Class B |
| M2PV250 | DC | - | ±10% | 9.0W | | |

Ambient and Fluid Temperature

| Temperature | Power | Fluid Temperature (F°) | | | Ambient Temp (F°) |
|-------------|-------|------------------------|----------|----------|-------------------|
| | | Water Std. | Air Std. | Oil Std. | |
| Max | AC | 140 | 176 | 140 | 140 |
| | DC | 104 | 140 | 104 | 104 |
| Min | AC | 33.8 | -41 | -50 | -50 |
| | DC | | | | |
| Insulation | | Class B | | | |

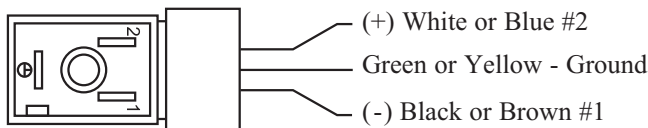
Ordering code

M2PV — 150 — E — 15 — 24VDC — 1

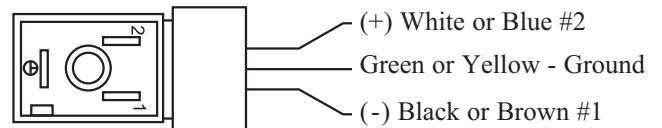
| Model | Orifice Size | Seal Material | Port Size | Voltage | Electrical |
|--|--------------|---------------|--------------------|-------------------|--------------------------|
| M2PV: 2 port 2 position solenoid valve | 150: 250: | E: EPDM | 15: 1/2" 25: 1" | 24 VDC 110 VAC | Blank: DIN 1: Grommet |

DIN Connector Hook-Up Diagram

200, 300, 400 Series (With LED)
Polarity sensitive



Series 100 (No LED)
Not polarity sensitive



Hand Lever Valves

M4H400 series

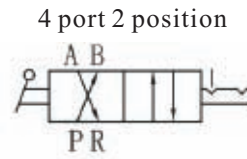
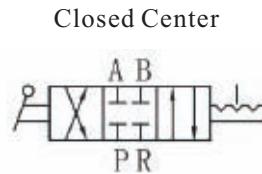


| | | |
|----------------|---------------------------------|-----------|
| Model | M4H210-06 | M4H310-08 |
| Fluid | Air | |
| Actuation | Direct acting hand lever | |
| Type | 5 ports - 2 position - Detented | |
| Flow | Cv .078 | Cv 1.39 |
| Port sizes | 1/8" NPT | 1/4" NPT |
| Pressure range | 0 to 120 PSI | |
| Temperature | 23 to 140° F | |
| Lubrication | Not required | |

Refer to MFD Pneumatics' website for further dimensions.

| | | | | | | |
|---------------|--------------------------------|-------------------------|----------------------|----|---|----|
| Ordering code | | | | | | |
| M4H | — | 3 | — | 10 | — | 08 |
| Model | Code | Valve Type | Port Size | | | |
| M4H | 2: 200 Series 3: 300 Series | 10: 5 port - 2 position | 06: 1/8" 08: 1/4" | | | |

M4HV series



| | | | | |
|----------------|----------------------|--------------|--|--------------|
| Model | M4HV310-08-S | M4HV410-15-S | M4HV330-08-S | M4HV430-15-S |
| Fluid | Air | | | |
| Type | 4 ports - 2 position | | 4 ports - 3 position Closed Center - Detented | |
| Flow | Cv 0.89 | Cv 5.29 | Cv 0.89 | Cv 5.29 |
| Port sizes | 1/4" NPT | 1/2" NPT | 1/4" NPT | 1/2" NPT |
| Pressure range | 0 to 120 PSI | | | |
| Temperature | 23 to 145° F | | | |
| Lubrication | Not required | | | |

Refer to MFD Pneumatics' website for further dimensions.

| | | | | | | | | |
|---------------|----------------------------|--|----------------------|---------------|---|----|---|---|
| Ordering code | | | | | | | | |
| M4HV | — | 3 | — | 10 | — | 08 | — | S |
| Model | Code | Valve Type | Port Size | Mounting Type | | | | |
| M4HV | 3: 3 Series 4: 4 Series | 10: 4 port - 2 position 30: 4 port - 3 position | 08: 1/4" 15: 1/2" | S: Panel nut | | | | |

Push - Pull Valves

M4L series



| | | |
|----------------|------------------------------|-----------|
| Model | M4L210-06 | M4L310-08 |
| Fluid | Air | |
| Port size | 1/8" NPT | 1/4" NPT |
| Pressure range | 0 to 120 PSI | |
| Flow | Cv .78 | Cv 1.39 |
| Temperature | 23 to 140° F | |
| Type | 5 Port - 2 Position Detented | |

Refer to MFD Pneumatics' website for further dimensions.

Ordering code

M4L — 2 — 10 — 08

| Model | Code | Valve Type | Port Size |
|-------|--------------------------------|-------------------------|----------------------|
| M4L | 2: 200 Series 3: 300 Series | 10: 5 port - 2 position | 06: 1/8" 08: 1/4" |

Foot Pedal Valves

M4F series



| | | |
|----------------|----------------------|-------------|
| Model | M4F210-08G | M4F310-08LG |
| Type | 5 ports - 2 position | |
| Fluid | Air | |
| Operating | Direct Acting | |
| Port size | 1/4" NPT | |
| Pressure range | 0 to 120 PSI | |
| Temperature | 23 to 140° F | |
| Lubrication | Not required | |

Refer to MFD Pneumatics' website for further dimensions.

Ordering code

M4F210 — 08 — G

| Model | Port Size | Note |
|-------|-----------|------|
|-------|-----------|------|

M4L 08: 1/4" G: Non-locking foot pedal with Guard
 LG: Locking foot pedal with Guard

Without Lock



With Lock



Flow Control Valves

MASC series



| | | | | |
|----------------|--------------|------------|------------|------------|
| Model | MASC100-06 | MASC200-08 | MASC300-10 | MASC300-15 |
| Fluid | Air | | | |
| Port size | 1/8" NPT | 1/4" NPT | 3/8" NPT | 1/2" NPT |
| Pressure range | 0 to 140 PSI | | | |
| Temperature | 23 to 140° F | | | |
| Flow | Cv | .407 | .813 | 1.524 |
| | SCFM | 14.1 | 28.2 | 53.0 |

Refer to MFD Pneumatics' website for further dimensions.

| | | |
|---------------|---------------|-----------|
| Ordering code | | |
| MASC | — 200 — | 08 |
| Model | Type | Port Size |
| MASC | 1: 100 Series | 06: 1/8" |
| | 2: 200 Series | 08: 1/4" |
| | 3: 300 Series | 10: 3/8" |
| | | 15: 1/2" |

Mini Regulators

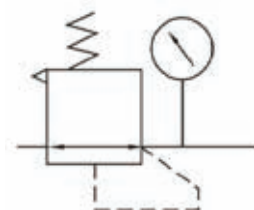
| | | |
|----------------|---|-----------|
| Model | MSR200-06 | MSR200-08 |
| Fluid | Air | |
| Port Size | 1/8" NPT | 1/4" NPT |
| Pressure range | 8 to 140 PSI | |
| Max. Pressure | 145 PSI | |
| Temperature | 23 to 140° F | |
| Type | Relieving / Press to lock adjustable knob | |
| Body Material | Aluminum | |
| Includes | Gauge / Bracket / Nut / 2 Gauge Ports | |

Refer to MFD Pneumatics' website for further dimensions.



MSR series

| | | |
|---------------|-----------------|-----------|
| Ordering code | | |
| MSR | — 200 — | 08 |
| Model | Type | Port Size |
| MSR | 200: 200 Series | 06: 1/8" |
| | | 08: 1/4" |



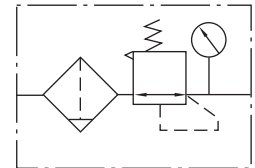
Filter - Regulators

| Model | MGFR200-06 | MGFR200-08 | MGFR300-08 | MGFR300-10 | MGFR400-15 |
|---------------------|---|------------|--|------------|--------------|
| Fluid | Air | | | | |
| Port size | 1/8" NPT | 1/4" NPT | 1/4" NPT | 3/8" NPT | 1/2" NPT |
| Type | All units are relieving regulators with push to lock adjustment knobs | | | | |
| Micron Rating | 40μ | | | | |
| Pressure range | 23 to 120 PSI | | | | |
| Max. Pressure | 145 PSI | | | | |
| Temp. range | 41 to 140° F | | | | |
| Drain bowl capacity | 2.2 FL. OZ. | | 8.7 FL. OZ. | | 17.5 FL. OZ. |
| Bowl material | Polycarbonate bowl | | Polycarbonate bowl with metal bowl guard | | |
| Drain | Semi-auto | Semi-auto | Auto | Auto | Auto |

MGFR series



| | |
|---------------|--------------|
| Ordering code | MGFR200 — 08 |
| Model | Port Size |
| MGFR200 | 06: 1/8" |
| MGFR300 | 08: 1/4" |
| MGFR400 | 10: 3/8" |
| | 15: 1/2" |

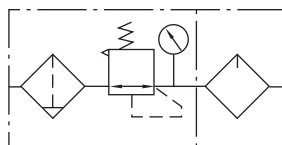


FRL Combination



MGFC series

| Model | MGFC200-06 | MGFC200-08 | MGFC300-08 | MGFC300-10 | MGFC400-15 |
|---------------------|---|------------|--|------------|--------------|
| Fluid | Air | | | | |
| Port size | 1/8" NPT | 1/4" NPT | 1/4" NPT | 3/8" NPT | 1/2" NPT |
| Type | All units are relieving regulators with push to lock adjustment knobs | | | | |
| Filtering | 40μ | | | | |
| Pressure range | 23 to 120 PSI | | | | |
| Max. Pressure | 145 PSI | | | | |
| Temp. range | 41 to 140° F | | | | |
| Drain bowl capacity | 2.2 FL. OZ. | | 8.7 FL. OZ. | | 17.5 FL. OZ. |
| Oil bowl capacity | 5.5 FL. OZ. | | 16.4 FL. OZ. | | 34.9 FL. OZ. |
| Bowl material | Polycarbonate bowl | | Polycarbonate bowl with metal bowl guard | | |
| Mounting | Fully compatible to SMC FRL | | | | |
| Drain | Semi-auto | Semi-auto | Auto | Auto | Auto |



| | |
|---------------|--------------|
| Ordering code | MGFC200 — 08 |
| Model | Port Size |
| MGFC200 | 06: 1/8" |
| MGFC300 | 08: 1/4" |
| MGFC400 | 10: 3/8" |
| | 15: 1/2" |

Refer to MFD Pneumatics' website for further dimensions.

FRL Accessories

MGZ series
Pressure Relief Valve



| Model | MGZ200 | | MGZ300 | | MGZ400 |
|-----------------|----------------------|------|--------|------|--------|
| | 06 | 08 | 08 | 10 | 15 |
| Fluid | Air | | | | |
| Port Size (NPT) | 1/8" | 1/4" | 1/4" | 3/8" | 1/2" |
| Acting type | Manual | | | | |
| Valve type | 3 port - 2 way | | | | |
| Pressure range | 0~0.9MPa (0-130 PSI) | | | | |
| Proof pressure | 1.5MPa (215 PSI) | | | | |
| Temperature | 41-140° F | | | | |
| Operation angle | 90° | | | | |

Refer to MFD Pneumatics' website for further dimensions.

Ordering code

MGZ300 — 08 — T

| Model | Port Size | Accessories |
|--------|----------------------|---------------|
| MGZ200 | 06: 1/8" | T: T- bracket |
| MGZ300 | 08: 1/4" | Included |
| MGZ400 | 10: 3/8" 15: 1/2" | |

MGA series
Air Distribution Block



| Model | MGA214 | | MGA314 | | MGA414 |
|-----------------|------------------|------|--------|------|--------|
| | 06 | 08 | 08 | 10 | 15 |
| Fluid | Air | | | | |
| Port Size (NPT) | 1/8" | 1/4" | 1/4" | 3/8" | 1/2" |
| Way number | 4 | | | | |
| Pressure range | 0-130 PSI | | | | |
| Proof pressure | 1.5MPa (215 PSI) | | | | |
| Temperature | 41-140° F | | | | |

Refer to MFD Pneumatics' website for further dimensions.

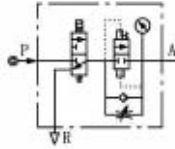
Ordering code

MGA214 — 08 — T

| Model | Port Size | Accessories |
|--------|----------------------|---------------|
| MGA214 | 06: 1/8" | T: T- bracket |
| MGA314 | 08: 1/4" | Included |
| MGA414 | 10: 3/8" 15: 1/2" | |

FRL Accessories

MGV series
Soft Start-up Valve



| | | | | | |
|-------------------|---------------------------------------|-----------|-----------|-----------|-----------|
| Model | MGV200-06 | MGV200-08 | MGV300-08 | MGV300-10 | MGV400-15 |
| Fluid | Air | | | | |
| Port Size | 1/8" | 1/4" | 1/4" | 3/8" | 1/2" |
| Pressure range | 2.5~9.0bar (0.25~0.9MPa) (35-130 PSI) | | | | |
| Proof pressure | 215 PSI | | | | |
| Temperature | 41-140° F | | | | |
| Acting Type | Standard Control | | | | |
| Exhaust port size | 1/4" | | 3/8" | | 1/2" |
| Power connection | DIN or Grommet | | | | |
| Voltage | 110VAC 24VDC | | | | |
| Voltage range | -15%Us~10%Us | | | | |
| Insulation | Class B | | | | |
| Power consumption | 110V AC: 2.5 VA / 24V DC: 3.0 W | | | | |

Refer to MFD Pneumatics' website for further dimensions.

| | | | | | | | |
|---------------|--------|---|-----------|---|---------------|---|---------|
| Ordering code | MGV300 | — | 08 | — | T | — | 24 VDC |
| | Model | | Port Size | | Accessories | | Voltage |
| | MGV200 | | 06: 1/8" | | T: T- bracket | | 24V DC |
| | MGV300 | | 08: 1/4" | | Included | | 110V AC |
| | MGV400 | | 10: 3/8" | | | | |
| | | | 15: 1/2" | | | | |

Compact Cylinders



| | | | | | |
|---------------------|--------------------|----|----|----------|----------|
| Bore size (mm) | 12 | 20 | 25 | 32 | 50 |
| Fluid | Double Acting | | | | |
| Fluid | Air Filtration 40μ | | | | |
| Pressure range | 14.5 to 130 PSI | | | | |
| Temperature range F | 32~176° F° | | | | |
| Port size | M5 | | | 1/8" NPT | 1/4" NPT |

All bore sizes include a magnetic piston. Additional stroke lengths available.
Refer to MFD Pneumatics' website for further dimensions.



| | | | | | | | | | |
|---------------|-------|---|----------------|---|-----------|---|-------------------|---|-------------|
| Ordering code | MACQ | — | S | — | 20 | — | 25 | — | B |
| | Model | | Magnet | | Bore Size | | Stroke | | Rod type |
| | MACQ | | S: With magnet | | 12 | | 15, 25, 50 mm | | B: Male rod |
| | | | | | 20 | | 15, 25, 50 mm | | Blank: |
| | | | | | 25 | | 15, 25, 50, 65 mm | | Female |
| | | | | | 32 | | 15, 25, 50, 65 mm | | |
| | | | | | 50 | | 15, 25, 50, 65 mm | | |

Compact Cylinder Accessories

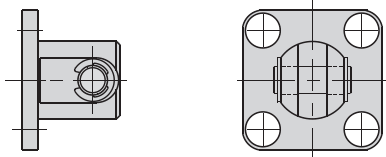
MACQ series Mounting Brackets List

| Series | Bore Sizes | MACQ |
|----------------------------|--------------------|-------------|
| Accessories type | | Male thread |
| Clevis = Y* | 12, 20, 25, 32, 50 | * |
| Clevis Pivot Bracket = CB* | 12, 20, 25, 32, 50 | * |

*Pin included on both Y and CB

Clevis Pivot Bracket = CB

Bore 12-25



Ordering code

MACQ — 12 — CB

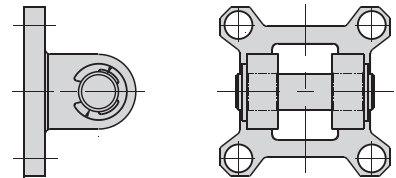
Model Bore size Accessories

CB
Y

PIN

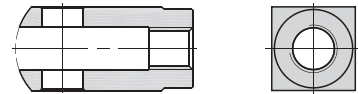


Bore 32-50

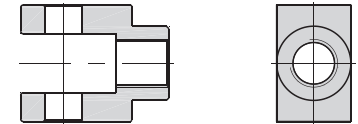


Clevis=Y

Bore 12-25



Bore 32-50



Sensor Switches

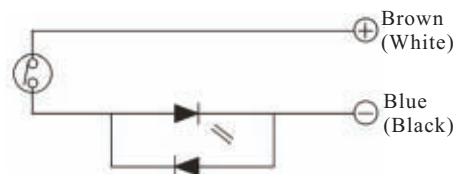
MCSI series

Ordering code

MCSI — G

Model Type

Groove



| Sensors switch type | Operating voltage range | Operating current range | Response Time | Shock Resistance | Vibration Resistance | Temperature | Environmental Protection | Lamp | Lead Wire | Life Time Cycles |
|---------------------|----------------------------|--------------------------|---------------|------------------|----------------------|--------------|--------------------------|------|-----------|--------------------|
| MCSI - G | DC: 5V-240V AC: 5V-240V | DC: 5-50mA AC: 5-40mA | 0.3ms max | 300m/S (30G) | 10-50 (Hz) | 32 to 140° F | IP-67 | LED | 2M | At Least 5 million |

Specialty Products For O.E.M Quantities Only



Compact Cylinders

- Festo Interchangeable
- Single Acting
- Double Acting
- Double Rod

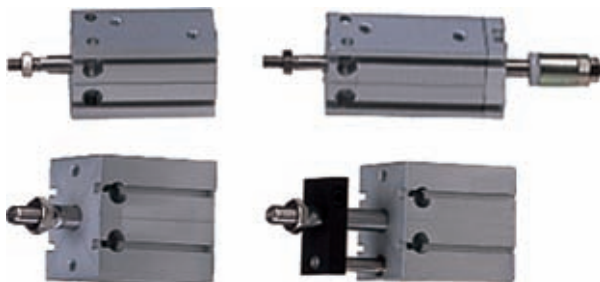


ISO Standard Cylinders

- (6431, VDMA24562)
- Smooth Body
- Single Acting
- Double Acting
- Double Rod
- Adjustable Stroke



Twin Rod Cylinders



Multi-Mounting Cylinders

- Single Acting
- Double Acting
- Double Rod
- Adjustable Stroke
- Non-Rotating



Stainless Steel Cylinders

- Single Acting
- Double Acting
- Double Rod
- Adjustable Stroke
- Versatile Mounting

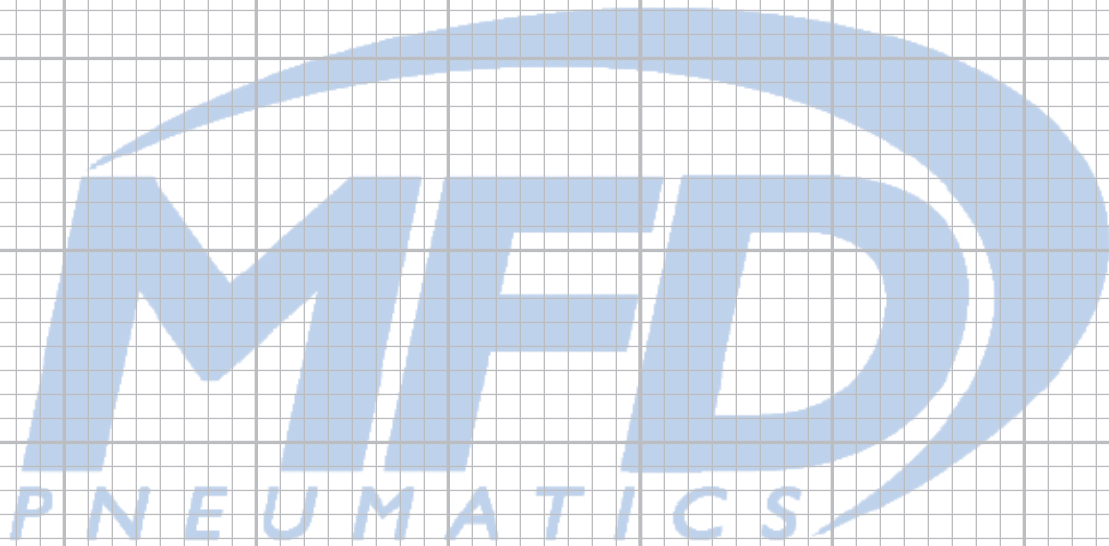


www.mfdpneumatics.com

Notes



Notes





Tel: 1-866-264-9560
Fax: 1-733-685-0597

Visit our web site at
www.mfdpneumatics.com

YOUR STOCKING DISTRIBUTOR IS: